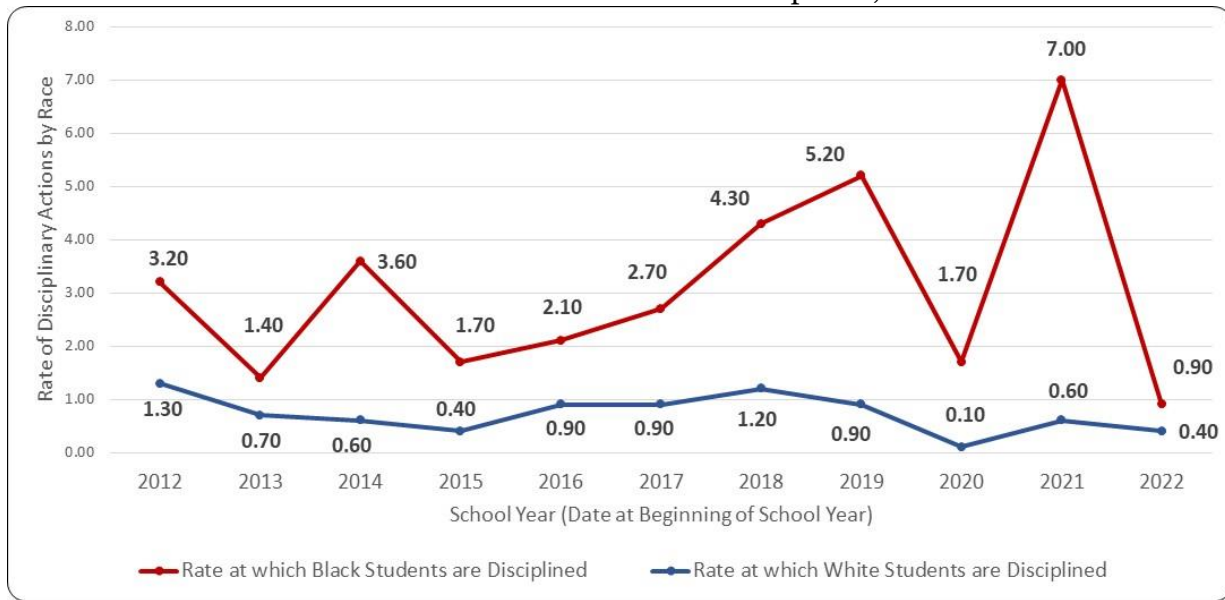


Inequities in School Discipline in Melrose Public Schools

Update with Data from the 2022-2023 School Year*

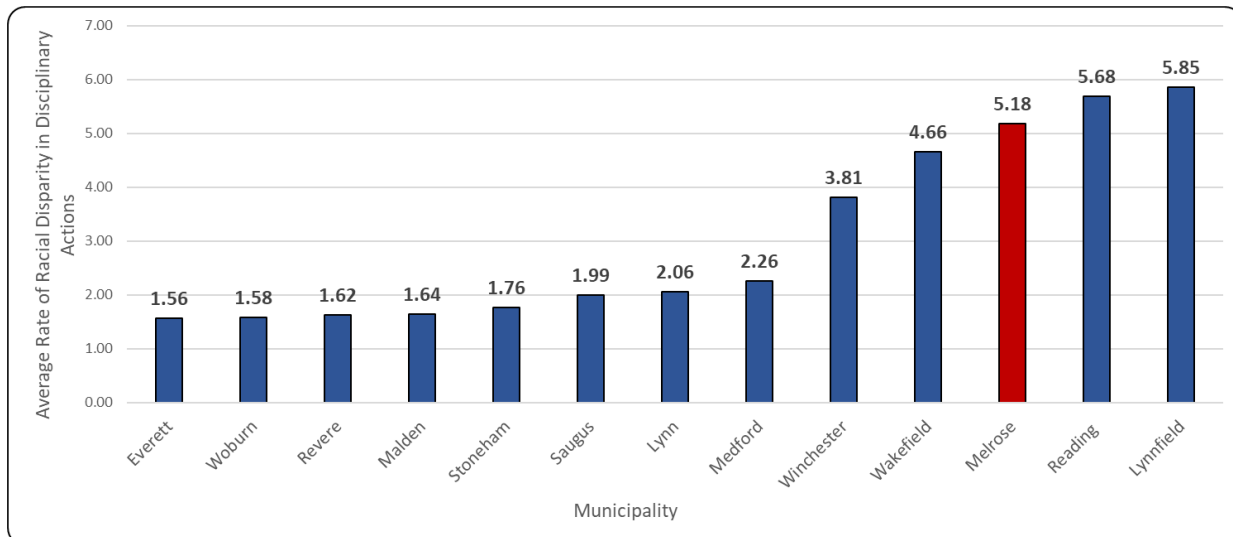
In each year from 2012 through 2022, Melrose Public Schools have disciplined Black students at a higher rate than white students. The pandemic interrupted a four-year-long increase in the rate at which Black students are disciplined, only for the upward trend to resume the following year. Hopefully data from the 2022-2023 school year signal an intentional effort to close the racial gap in school discipline.

Rate at which Black and White Students in Melrose are Disciplined, from 2012-2022



Over the past 11 years, the Melrose Public Schools have disciplined Black students at more than five times the rate of white students. Melrose has one of the highest rates of racial inequity in school discipline compared with neighboring communities. Specifically, we have greater inequity than Everett, Woburn, Revere, Malden, Stoneham, Saugus, Lynn, Medford, Winchester, and Wakefield.

Average Rate at Which Area Public Schools Discipline Black Students Relative to White Students, 2012-2022



*Data labels are based on the start of the school year; data from the 2022-2023 school year are labeled “2022.” This report was prepared by Jane Allen and checked for accuracy by David Valade of Reparations for Melrose. Methods can be found in the report *Inequities in School Discipline in Melrose Public Schools* at reparationsformelrose.org.